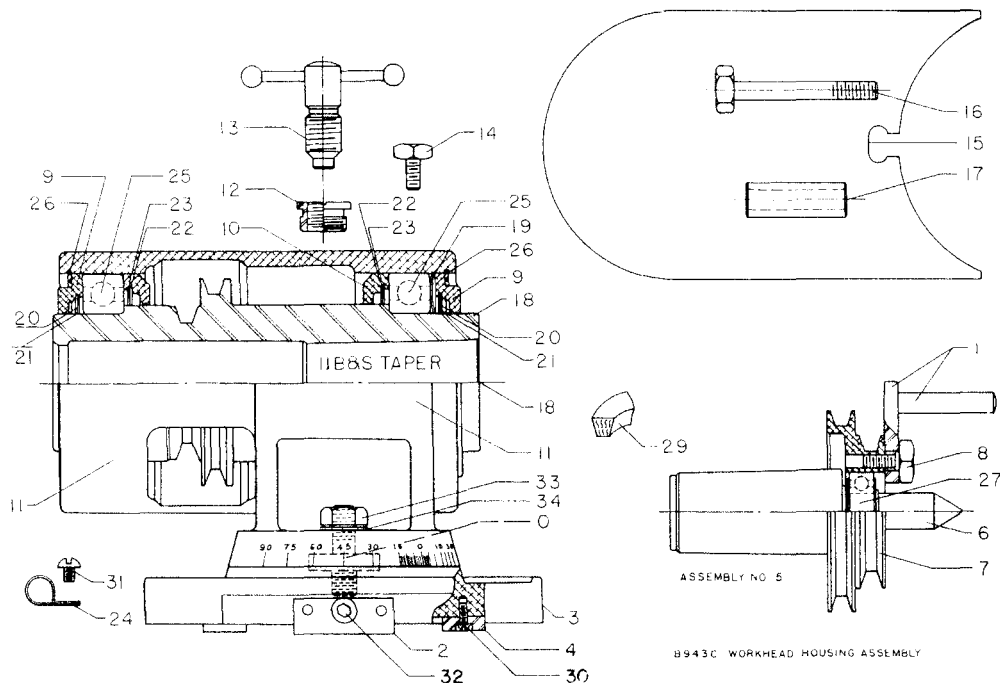


B943C Work Head Housing Assembly



Index No.	Part No.	Quan. Req.	Description
0	B620R	1	Stud
2	B822B	1	Clamp Bar Assembly
3	B942B	1	Base
4	B942T	4	T-Slot Block
5	B943D	1	Dead Center Assembly
9	B943F	2	Outer Bearing Seal
10	B943G	2	Inner Bearing Seal
11	B943H	1	Workhead Housing
12	B943HB	1	Threaded Bushing
13	B943L	1	Lock Screw Assembly
14	B943MR	2	Saddle Hold Down Screw
15	B943PG	1	Belt Guard
16	B943PS	1	Special Screw
17	B943PT	1	Guard Spacer
18	B943S	1	Spindle
19	B943W	1	Wavy Spring Washer
20	B943YA	2	Plya Seal
21	B943YB	2	Cap
22	B943YC	2	Plya Seal
23	B943YD	2	Cap
	2581-043	1	O-Ring (3½ x 3⅝ x ¼)

Index No.	Part No.	Quan. Req.	Description
24	EC8	1	Wire Clamp
25	2MM9112WICRDU	1 pr.	Ball Bearing Duplex
26	RR-375	2	Spirolox Ring—Internal
29	B943VB	1	Belt, Standard Belt
	B943VBL		Belt, Long Belt (for B943MPL)
	B943VBS		Belt, Short Belt (for B943MPL)
	1220	1	V-Belt
30	6-32x¾	4	St. Round Head Screw
31	10-32x¼	1	Round Head Machine Screw (H.B.)
32	¾x¾ SAE	1	Hex Socket Cap Screw
33	¾ USS	1	Hex Nut (H)
34	¾ SAE	1	Washer (H)
B943D DEAD CENTER ASSEMBLY			
1	B643TR	1	Drive Pin Assembly
6	B943DC	1	Dead Center
7	B943DP	1	Dead Center Pulley
8	B943DS	1	Special Screw
27	202KLL3	1	Ball Bearing

ACCESSORIES FOR B943 MOTOR DRIVEN WORK HEAD

Part No.	Description
B641	Collet Fixture
B641C	Collets for B641 Collet Fixture. Available sizes: ⅜" to 1" by 64ths, ⅜" to ¼" by 64ths.
B641K	Straight Sleeves. Available sizes: 1⅞", 1⅝", 1⅜", 1¼".
B641B&S	No. 12 B&S Collet Fixture for B943 Head with No. 12 B&S Spindle.
B641AB&S	No. 12 B&S Adaptor, Collet nosepiece for 5C Collets, used with B641B&S.
B641M	No. 5 M.T. Collet Fixture required for B943 Head with No. 5 Morse Taper Spindle.
B641AM	No. 5 M.T. Adaptor, Collet nosepiece for 5C Collets, used with B641M.
B642TB&S	Taper Sleeves, 12 B&S Outside to 1, 2, 3, 4 Morse I.D.; 5, 7, 9, 10, 11 B&S I.D.
B642TM	Taper Sleeves, 5 Morse Outside to 1, 2, 3, 4 Morse I.D.; 5, 7, 9, 10, 11 B&S I.D.

Part No.	Description
B642K	No. 11 B&S Adaptor with standard Milling Machine Taper Socket for holding B&S Cam Lock Tapers. Available in taper Nos. 10, 20 and 30.
B642T	Taper Sleeves. Available sizes: Morse 1, 2, 3 and 4; Brown and Sharp 5, 7, 8, 9 and 10.
B643T	Center and Drive Plate Assembly can be used as live center and drive plate.
B844E	6" 4-Jaw Independent Chuck mounted on No. 11 B&S Arbor.
B943DF	No. 11 B&S Dead Center with Carbide Tip.
B943DB	No. 12 B&S Dead Center.
B943DM	No. 5 M.T. Dead Center.
B944	4" 6-Jaw Adjustru Chuck.
B946	4" 3-Jaw Adjustru Chuck mounted on A643P No. 11 B&S Arbor.
B981	Collet Fixture Quick Release.