

## 4X6 Bandsaw tricks from Ed Weldon

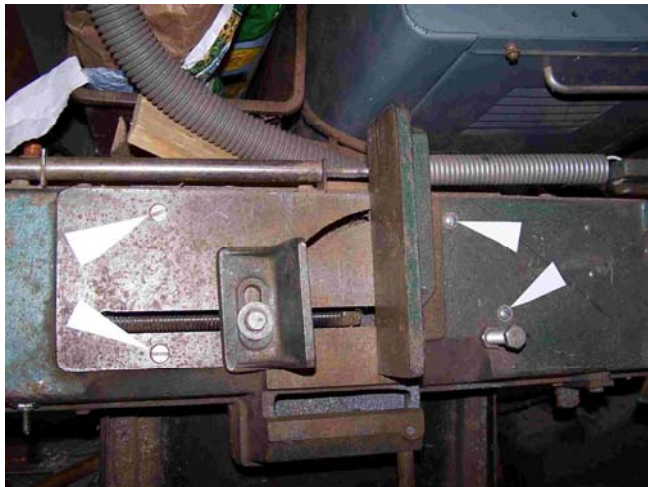
How to cut a piece too small to fit in the vise?



Simple; clamp it to the outfeed table.



But first you need to add a flat surface to the bottom of the table casting.  $\frac{3}{4}$ " plywood here.



Four 5/16-18 screws, left two flat head c'sink into flat of table, right two round heads.



Looking at underside note I used cabinet maker's T nuts for easy attachment.



Here I remove the chip pan so a 6" C-clamp can be used. Note straight edge clamped in vise.

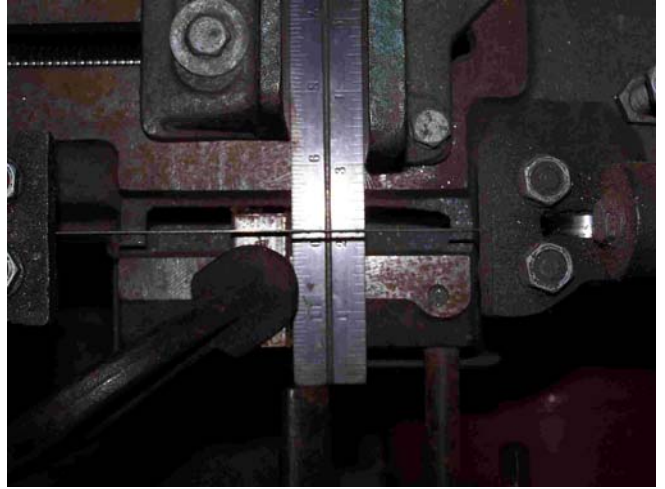


Needed a grabber to fish the cut end of the square tube out on the "hole".

I could have cut an access hole for easy cleanout; but chose to avoid weakening the plywood cover in the clamping area. The answer is my shop vac. See next page.



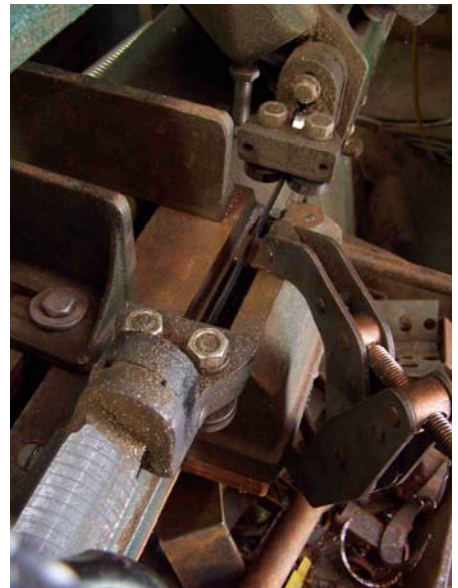
The narrow nozzle on my shop vacuum goes right into the slot for chips and small cutoffs.



Birds eye view of the cut.



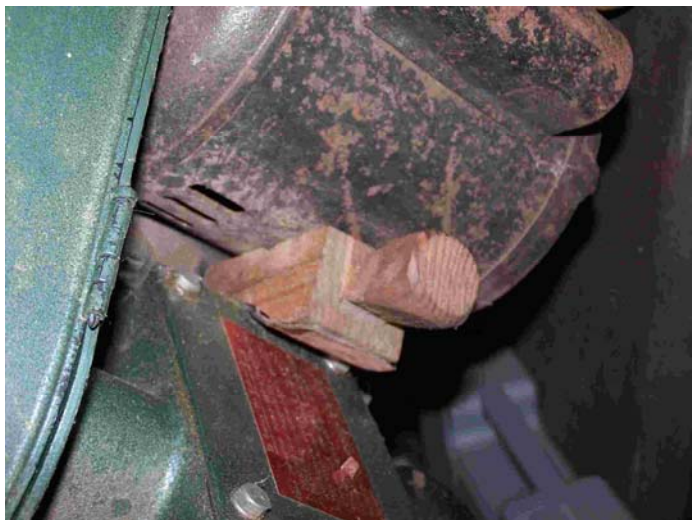
Chip tray is two garage sale baking pans sitting on angle irons attached to saw legs. Note two protruding 5/16 bolts that position the lower pan to the angle irons and enable quick removal for C-clamp use.



Another small flat piece being cut down.



Yeah I know....Not to code.



Quickie belt tightener. Hokey, but works. Note handle.